

NOVEMBER 3, 2020 ELECTION VOTING OPTIONS



OVERVIEW

- 72,600 number Santa Monica registered voters (September 2020)
 - Vote-By-Mail (VBM) Ballots mailed to registered voters
 - Alternate Ballot Order – Priority for local elections
- About 400 VBM Drop-Off Box Locations in Los Angeles (LA) County
 - 5 locations in Santa Monica
- 17 Additional days for County to receive ballots by mail
- Where's My Ballot? – NEW Ballot tracking system
- About 800 number In-Person Vote Centers available and will follow State and County public health guidelines
 - 10 locations in Santa Monica



ALTERNATE BALLOT ORDER

- Three-year pilot program
- Local candidates/measures first
 1. City Council – 4-year
 2. City Council – 2 year
 3. School Board
 4. College Board
 5. Rent Control Board

Official Ballot 2020-11-03-EN/0459/3
Page 2 / 6
GENERAL ELECTION, November 03, 2020 • County of Los Angeles

CITY/LOCAL	SANTA MONICA COMMUNITY COLLEGE DISTRICT Member of the Board of Trustees	SANTA MONICA CITY GENERAL MUNICIPAL ELECTION Member of the Rent Control Board
SANTA MONICA-MALIBU UNIFIED SCHOOL DISTRICT Member of the Board of Education Vote For No More Than THREE	Vote For No More Than THREE	Vote For No More Than TWO
<input type="radio"/> MARIA LEON-VAZQUEZ Boardmember/College Administrator	<input type="radio"/> SUSAN AMINOFF Santa Monica College Trustee/ Professor	<input type="radio"/> CAROLINE TOROSIS Rent Control Board Commissioner
<input type="radio"/> ESTHER HICKMAN Parent	<input type="radio"/> BRIAN O'NEIL Professor	<input type="radio"/> AISHAH NEWSON Data Scientist
<input type="radio"/> JENNIFER SMITH Parent/Community Volunteer	<input type="radio"/> MARGARET QUINONES-PEREZ Santa Monica College Trustee/ Professor/Counselor	<input type="radio"/> ANASTASIA FOSTER Rent Control Board Commissioner
<input type="radio"/> DHUN MAY Teacher	<input type="radio"/> ROB GREENSTEIN RADER Santa Monica College Trustee/ Professor	<input type="radio"/> ROBERT KRONOVET Property Management Services
<input type="radio"/> JASON FELDMAN Civil Rights Attorney	<input type="radio"/> Write-In Candidate	<input type="radio"/> Write-In Candidate
<input type="radio"/> KEITH COLEMAN Educator/Parent/Economist	<input type="radio"/> Write-In Candidate	<input type="radio"/> Write-In Candidate
<input type="radio"/> JON KEAN School Board President	<input type="radio"/> Write-In Candidate	MEMBER OF THE STATE ASSEMBLY 50th District Vote For ONE
<input type="radio"/> STEVEN JOHNSON Marketing Technology Consultant	<input type="radio"/> Write-In Candidate	<input type="radio"/> RICHARD BLOOM Party Preference: Democratic California State Assemblymember
<input type="radio"/> Write-In Candidate	<input type="radio"/> Write-In Candidate	<input type="radio"/> WILL HESS Party Preference: Democratic Writer/Director/Producer
<input type="radio"/> Write-In Candidate		



HOW TO RETURN VOTE-BY-MAIL BALLOTS

- Drop-off at any LA County:
 - Drop-Off Boxes starting October 5
 - Vote Centers starting October 24 (remaining Centers available October 30)
- United States Post Office (USPS) starting October 5
 - **Return your ballot early!**
 - No postage required
 - **Must be postmarked by Election Day**
 - New law allow ballots to be processed if received by LA County Clerk within 17 days after the election
- Remember to **sign, date and seal** return envelope!
- Requests ballots to be forwarded or replaced by October 27



VOTE-BY-MAIL DROP-OFF BOXES



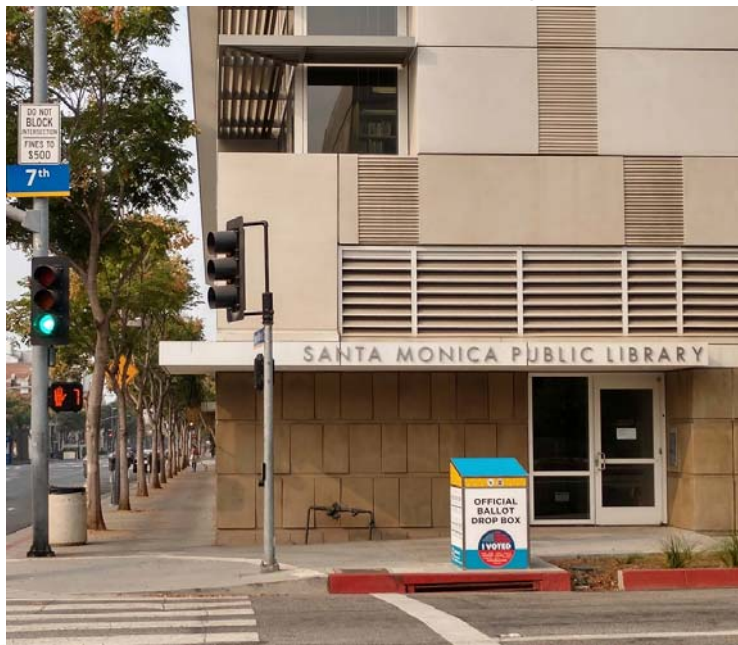
- Locations (Opens October 5)
 - 24-Hours
 - Main Library - 601 Santa Monica Boulevard (7th & Santa Monica)
 - Montana Branch Library – 1704 Montana Avenue (Montana & 17th)
 - Marine Park - 1406 Marine Street (Marine & Margaret Lane) - CORRECTION
 - Downtown Santa Monica Expo Station-NEW
 - Limited Hours (6 AM–11 PM)
 - Virginia Avenue Park – 2200 Virginia Avenue (Virginia Avenue Lot)

- List of Locations available at [lavote.net](https://www.lavote.net)

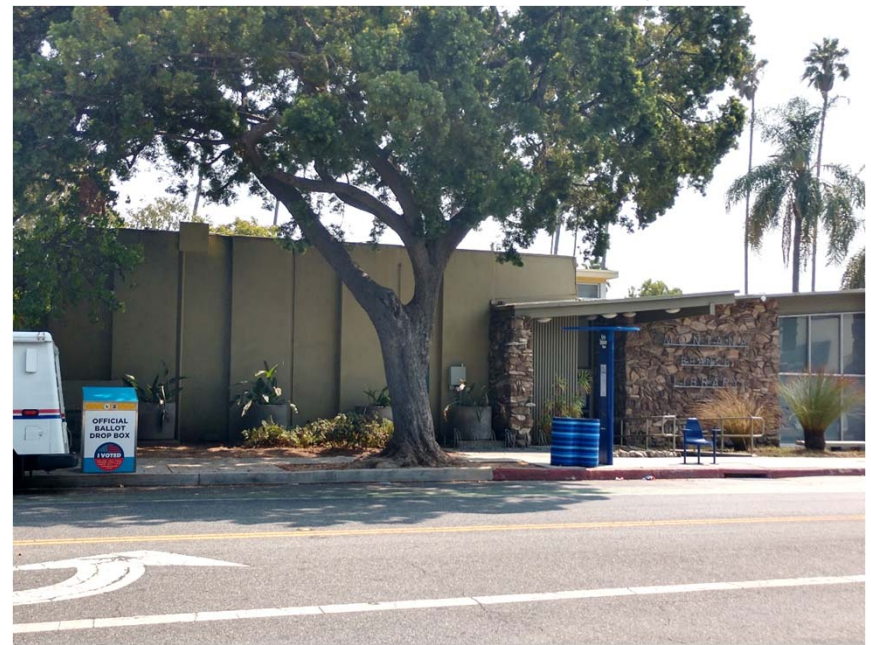


VOTE-BY-MAIL DROP-OFF BOXES (Continued)

Main Library

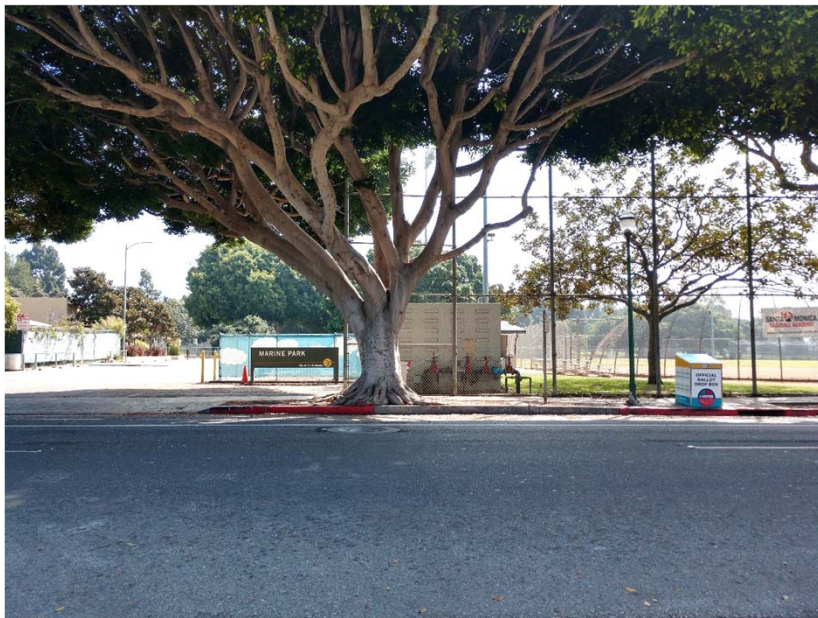


Montana Library



VOTE-BY-MAIL DROP-OFF BOXES (Continued)

Marine Park

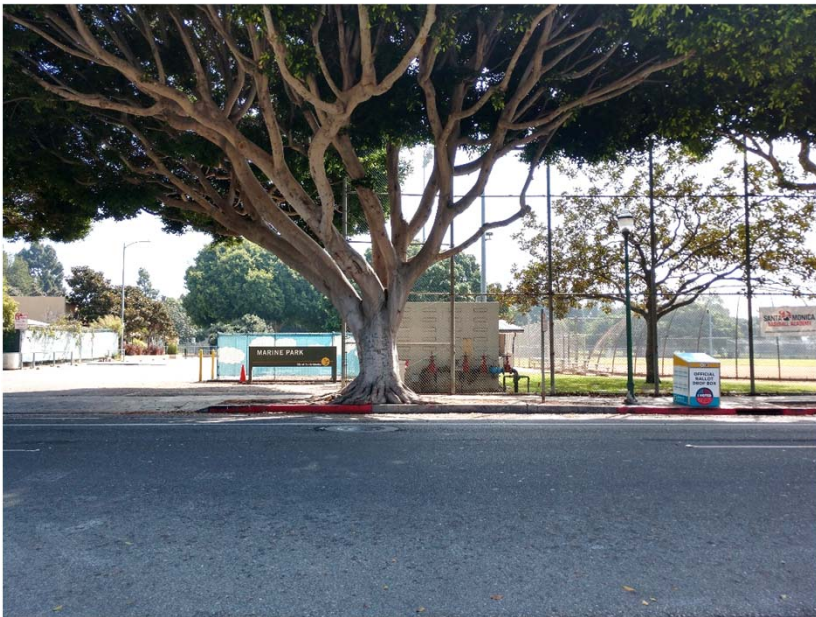


Virginia Avenue Park



VOTE-BY-MAIL DROP-OFF BOXES (Continued)

Downtown Santa Monica Expo Station



TRACK YOUR BALLOT

Where's My Ballot?

- **State** tracking system
- Real-time **notifications** via text, email and phone
- [WheresMyBallot.sos.ca.gov](https://wheresmyballot.sos.ca.gov)

SIGN-UP FOR



[WHERESMYBALLOT.SOS.CA.GOV](https://wheresmyballot.sos.ca.gov)

Vote By Mail Ballot Status

- **LA County** tracking system
- **Reference tool** and not a notification system
- [LAVote.net](https://lavote.net)



VOTE CENTERS

11-DAY LOCATIONS

- Opens Saturday, **October 24**
10 AM – 7 PM Daily
7 AM – 8 PM Election Day
- Santa Monica Community College,
Corsair Gymnasium
- National Typewriter Company, 1st
Floor, 1666 Euclid Street

5-DAY LOCATIONS

- Opens Friday, **October 30**
10 AM – 7 PM Daily
7 AM – 8 PM Election Day
- Former Fire Station 1, 1444 7th Street
- Barker Hangar, Santa Monica Airport
- Santa Monica High, Cafeteria
- Franklin Elementary, Cafetorium
- Grant Elementary, Auditorium
- John Muir Elementary, MPR
- Roosevelt Elementary, Auditorium
- Will Rogers Learning Comm, Cafeteria

List of Locations available at [LAVote.net](https://www.lavote.net)



VOTE CENTERS (Continued)

FLEX/MOBILE VOTE CENTER

- Third Street Promenade
 - Saturday, October 24
 - Time & Location TBD
- Virginia Avenue Park, Patio Room
 - Saturday, October 31
 - Time TBD

LA COUNTY CLERK/ REGISTRAR RECORDER

- Early in-person voting available at LA County Clerk's Headquarters starting October 5



List of Flex/Mobile Locations will be available at [LAVote.net](https://www.lavote.net)

City of Santa Monica | Records & Election Services (City Clerk) | 10/6/2020

IN-PERSON VOTING

Safe Presidential Election Plan

- Facial covering, physical distancing, sanitizing equipment
 - More information on lavote.net
- Quick Check-In
 - Codes can be found on Official SAMPLE Ballot, Vote Center Postcard and lavote.net
- Apply to be an Election Worker at lavote.net

Quick Check-In Code

Notice: Beginning with the November 3, 2020 General Election all registered voters will be accessible voting option during the COVID-19 pandemic.

Mailing of Vote by Mail ballots in all elections begins 29 days prior to Election Day. For more

Quick Check-in Code:



Scan this barcode at the Vote Center to speed up your check-in.

You are a registered voter eligible to vote in the following election(s):

- 11/03/2020 - GENERAL ELECTION

If you are a Permanent Vote By Mail voter, [click here](#) to view the status of your ballot.

[Click here](#) to view your Vote Center.

For assistance, call (800) 815-2666 option 2.



IMPORTANT DATES

NOW

- **Sample Ballots Mailed**

NOW

- **Vote-by-Mail (VBM) Ballots Mailed**
- **VBM Drop-Off Boxes unlocked**
- **Early voting at LA CC/RR**

October 19

- **Registration Deadline (VBM Mailing)**



IMPORTANT DATES (Continued)

October 24

- **11-Day Vote Centers Open**
10 AM–7 PM
(Conditional Voter Registration & Provisional Voting and VBM Drop-Off available)

October 27

- Deadline to request a **Replacement Ballot**

October 30

- **5-Day Vote Centers Open**
10 AM–7 PM
(Conditional Registration & Provisional Voting and VBM Drop-Off available)

November 3

- **Election Day**
7 AM–8 PM
- VBM Drop-Off **Boxes locked** at 8 PM
- Last day to have **VBM postmarked and mailed**



OFFICIAL ELECTION INFORMATION

- City Clerk's Office, (310) 458-8211, clerk@smgov.net
 - smvote.org – Local candidates and measures
- sos.ca.gov/elections – Where's My Ballot?, State Propositions
- lavote.net, (800) 815-2666 – Vote-By-Mail Ballots, Vote Centers and Election Workers, County candidates and measures
 - plan.lavote.net

